

## QUESTION

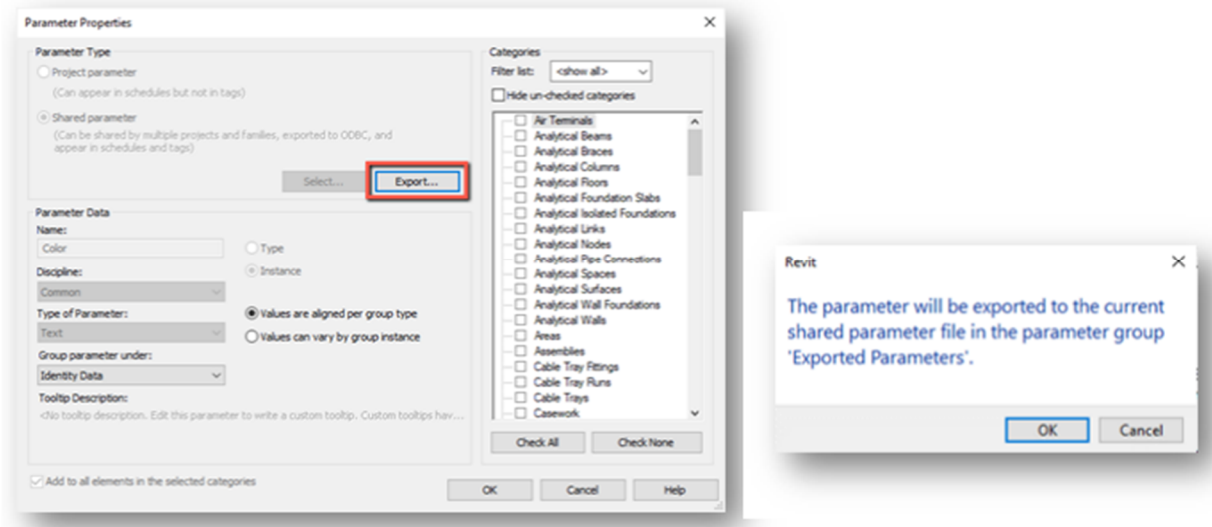
How do I transfer shared parameters from one Revit Project to another?

## ANSWER

To transfer shared parameters from one project or family to another you must export or add the parameter to a shared parameters file, and then use that shared parameters file when creating the project in the other file. There are a few scenarios.

### SCENARIO 1 – FROM A PROJECT – EXPORT

- First you need to ensure you are tied to a shared parameter file. From the Manage Tab choose Shared Parameters and see if your file is attached to a shared parameter file.
  - If not, you can either Browse to a shared parameter file location
  - Or Create a new one
- Next go to the Manage Tab > Project Parameters
  - Choose the parameter you want to export, select 'Modify' then select 'Export' and choose OK.
    - If the export button is NOT available the parameter is NOT set up as a shared parameter.
  - Repeat that for all parameters you wish to export.

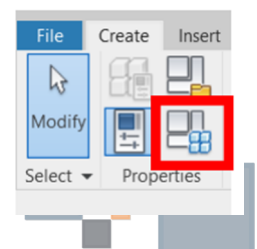


### NOTES

Some firms do not allow users to write to shared parameters file for the company as whole. You may need to copy that shared parameter text file to a location you have rights to edit to.

### SCENARIO 2 – FROM A FAMILY - EXPORT

- Shared Parameters are often within Revit families. They can also be exported to a shared parameter file.
  - Open the family you wish to export a shared parameter from.
  - Open the Family Types icon
  - Choose the parameter you want to export and edit it. From here you can export the parameter just as noted above.



**OPTION 3 – ADD SHARED PARAMETERS VIA TEXT/EXCEL INTO ANOTHER SHARED PARAMETER FILE.**

Use this option only if you are comfortable with the shared parameters editing process. A shared parameter is in fact a text file. It will look something like this:

```

myBIMTeam Shared Parameters.txt - Notepad
File Edit Format View Help
# This is a Revit shared parameter file.
# Do not edit manually.
*META  VERSION MINVERSION
META  2      1
*GROUP ID      NAME
GROUP 1      _Copyright
GROUP 2      Sheet & Titleblock Parameters
GROUP 3      Space Planning Masses
GROUP 4      Room Info
GROUP 5      Annotations
GROUP 6      Windows
GROUP 7      Doors
GROUP 8      Casework
GROUP 9      Life Safety
*PARAM GUID    NAME      DATATYPE    DATACATEGORY    GROUP    VISIBLE DESCRIPTION    USERMODIFIABLE
PARAM 6ac871a4-fb69-43f8-8ea4-2203a498d91c    Created By    TEXT          1          1          1          1
PARAM e6a4e5ad-9448-4fce-93b7-5fb1c4031173    Version TEXT          1          1          1          1
PARAM e2082a23-d350-4d8d-9afc-c923df315cd5    Sheet SK Ref Drawing TEXT          2          1          1          1
PARAM 0fe2f04f-e578-4dfc-a692-95da3ff4c1d7    Sheet Sub-Category TEXT          2          1          1          1

```

- You can add shared parameters from one text to the next by simply copying/pasting the information below \*PARAM
- It is important to know that the GROUP number determine which group Name which that shared parameter will show up in your Revit project or family.
  - You will want to change the group number of the parameter you are copying in to fall under whichever group name/number of your specific headings.
- The GUID number is its special unique ID number.
- This process of copying is sometimes easier to do in excel. After copying and modifying the information needed, simply copy back into the text file.

